



**#DESIGN
WITH HISTORY**
www.hugirdesign.com

#DESIGN BEHIND THE OBVIOUS

We look behind the obvious in each challenge.
Sharing ideas, generating experiences and creating
sensations are the result of the script for each story we tell.

A space where we challenge conventional design and seek
distinction in the product, environment and communication, in
order to rediscover improbable, sustainable and
differentiating solutions.

Dynamic and multidisciplinary in the holistic approach to
design, ambitious in bringing renewed thinking through
creativity in each project.

WHAT DOES THE FUTURE HAVE IN STORE?

Cross creativity, dynamics and imagination, in a new
identity that shares the culture of Design, challenging
the conventional and creating a difference in the future.



RECIFE

F=K.x

ZOTROPO

AMONITA

AGAPHANTO E.T.

KIT



IMAN



We have created a new lightweight workstation, easy to assemble and transport, so you can use it every day at your favorite workplace.

A base for your pc with a comfortable slope, which allows it to cool.

An accessory to place your phone or tablet, which you can use during meetings or video calls due to its inclination and an accessory for your pens.

Material: Wood and PLA

Finishes: Black Color



LISTED SET

PC Dimensions: 13 Pol. Ø3,5x35 cm | 15 Pol. Ø3,5x45 cm

Finishes: Black Color

Weight: ± 0,2 kg

Accessory Dimension: Mobile / Tablet Ø3,5x12 cm | Pencils and Pens Ø3,5x12 cm | Bag 45x13 cm

Inside Packaging: 1 PC Holder, 1 Mobile Phone / Tablet Holder, 1 Pen Holder, 1 Fabric Bag

Packing Dimension: 48x10x7 cm



IMAN

REF: imanlistado_hugir



FLOWERS SET

PC Dimensions: 13 Pol. Ø3,5x35 cm | 15 Pol. Ø3,5x45 cm

Finishes: Black Color

Weight: ± 0,2 kg

Accessory Dimension: Mobile / Tablet Ø3,5x12 cm | Pencils and Pens Ø3,5x12 cm | Bag 45x13 cm

Inside Packaging: 1 PC Holder, 1 Mobile Phone / Tablet Holder, 1 Pen Holder, 1 Fabric Bag

Packing Dimension: 48x10x7 cm



IMAN

REF: imanflores_hugir

RECIFE



From ceramic painting with its own expressiveness, from the mixture of pigments, joining the experience and techniques perfected over several years, we give life and continuity to the series of fish.

Recife fish that have a huge variety of colors, dazzling and bizarre patterns.

Technical: Ceramic Painting

Dimensions: ± 19x10x0.5 cm

Material: Ceramic

Finishes: Glazed



YELLOW – Chaetodon Interruptus

Habitat: reef – building corals in the Indian Ocean.

Size: up to 20 cm in length.

Usually seen at moderate depths, they swim in small groups.

Dimension: ± 19x10x0,5 cm

Weight: ± 0,25 kg

Inside Packing: 1 Fish

Packing Dimension: 16x16x1 cm

Packing: Custom

Note: Wall support included



RECIFE

REF: recifeyellow_hugir



CARNATION – Lampris Guttatus

Habitat: medium and deep waters of the Atlantic, Indian and Pacific oceans.

Size: up to 1.80 meters in length.

Weight: about 100kg

It has horizontal fins in the shape of wings.

Dimension: ± 19x10x0,5 cm

Weight: ± 0,25 kg

Inside Packing: 1 Fish

Packing Dimension: 16x16x1 cm

Packing: Custom

Note: Wall support included



RECIFE

REF: recifecarnation_hugir



BUTTERFLY - Chaetodon Ehippium

Habitat: tropical waters of Indonesia and Polynesia.

Size: up to 12.5 cm in length.

It is the servant of other fish.

Dimension: $\pm 19 \times 10 \times 0,5$ cm

Weight: $\pm 0,25$ kg

Inside Packing: 1 Fish

Packing Dimension: 16x16x1 cm

Packing: Custom

Note: Wall support included



RECIFE

REF: recifebutterfly_hugir



BLACK AND WHITE - Macolor Niger

Habitat: tropical marine waters of the Indo-West and Central Pacific.

Size: up to 75 cm in length

It is a moderately elongated fish with a large, forked tail fin.

Dimension: $\pm 19 \times 10 \times 0,5$ cm

Weight: $\pm 0,25$ kg

Inside Packing: 1 Fish

Packing Dimension: 16x16x1 cm

Packing: Custom

Note: Wall support included



RECIFE

REF: recifeblackandwhite_hugir



Surgeon - Acanthurus Leucosternon

Habitat: tropical coral reefs.

Size: up to 30 cm

It has two sharp spines like blades.

Dimension: $\pm 19 \times 10 \times 0,5$ cm

Weight: $\pm 0,25$ kg

Inside Packing: 1 Fish

Packing Dimension: 16x16x1 cm

Packing: Custom

Note: Wall support included



RECIFE

REF: recifesurgeon_hugir



AXE - Gasteropelecus Sternicla

Habitat: rivers in the Amazon.

Size: 6,5 cm.

It is the only fish that can actually fly.

Dimension: $\pm 19 \times 10 \times 0,5$ cm

Weight: $\pm 0,25$ kg

Inside Packing: 1 Fish

Packing Dimension: 16x16x1 cm

Packing: Custom

Note: Wall support included



RECIFE

REF: recifeaxe_hugir

$$F=K.x$$



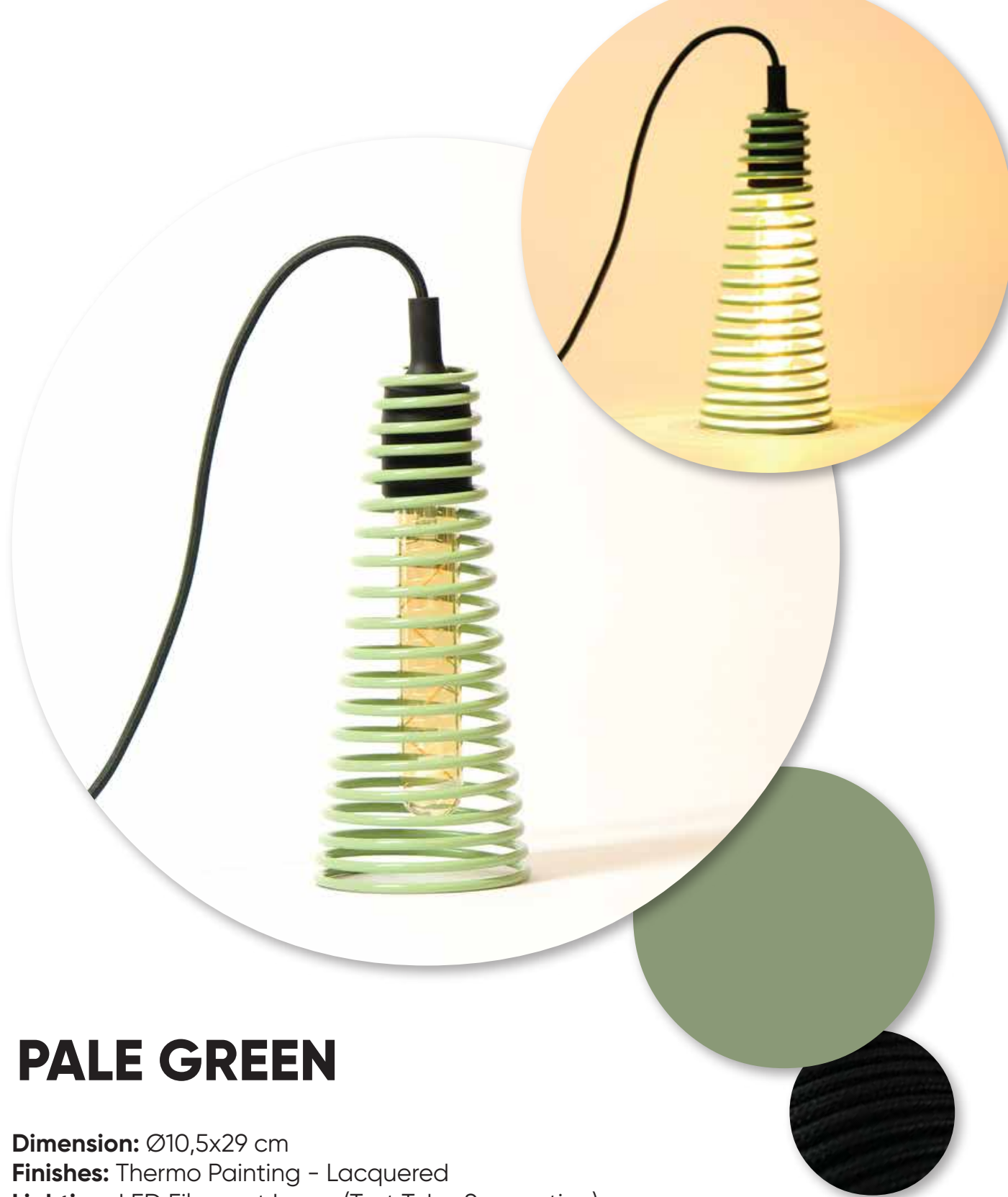
A device that stores energy in its shape through deformation and bonding between atoms.

Energy transformed into light, which passes through its interior to create an environment of reading and presence.

Dimensions: Ø10,5x29cm

Material: Steel

Finishes: Thermo Painting - Lacquered



PALE GREEN

Dimension: Ø10,5x29 cm

Finishes: Thermo Painting - Lacquered

Lighting: LED Filament Lamp (Test Tube Suggestion)

Cable Dimension: 150 cm

Cable: Coated with plain fabric

Weight: ± 0,8 kg

Inside Packing: 1 F=K.x

Packing Dimension: 35x12x14 cm

Packing: Custom

Note: Previously assemble, does not include lamp



F=K.x

REF: f=k.xpalegreen_hugir



RED BEIGE

Dimension: Ø10,5x29 cm

Finishes: Thermo Painting - Lacquered

Lighting: LED Filament Lamp (Test Tube Suggestion)

Cable Dimension: 150 cm

Cable: Coated with plain fabric

Weight: ± 0,8 kg

Inside Packing: 1 F=K.x

Packing Dimension: 35x12x14 cm

Packing: Custom

Note: Previously assemble, does not include lamp



F=K.x

REF: f=k.xredbeige_hugir



BRIGHT BLUE

Dimension: Ø10,5x29 cm

Finishes: Thermo Painting - Lacquered

Lighting: LED Filament Lamp (Test Tube Suggestion)

Cable Dimension: 150 cm

Cable: Coated with plain fabric

Weight: ± 0,8 kg

Inside Packing: 1 F=K.x

Packing Dimension: 35x12x14 cm

Packing: Custom

Note: Previously assemble, does not include lamp



F=K.x

REF: f=k.xbrightblue_hugir



PALE BROWN

Dimension: Ø10,5x29 cm

Finishes: Thermo Painting - Lacquered

Lighting: LED Filament Lamp (Test Tube Suggestion)

Cable Dimension: 150 cm

Cable: Coated with plain fabric

Weight: ± 0,8 kg

Inside Packing: 1 F=K.x

Packing Dimension: 35x12x14 cm

Packing: Custom

Note: Previously assemble, does not include lamp



F=K.x

REF: f=k.xpalebrown_hugir

ZOTROPO



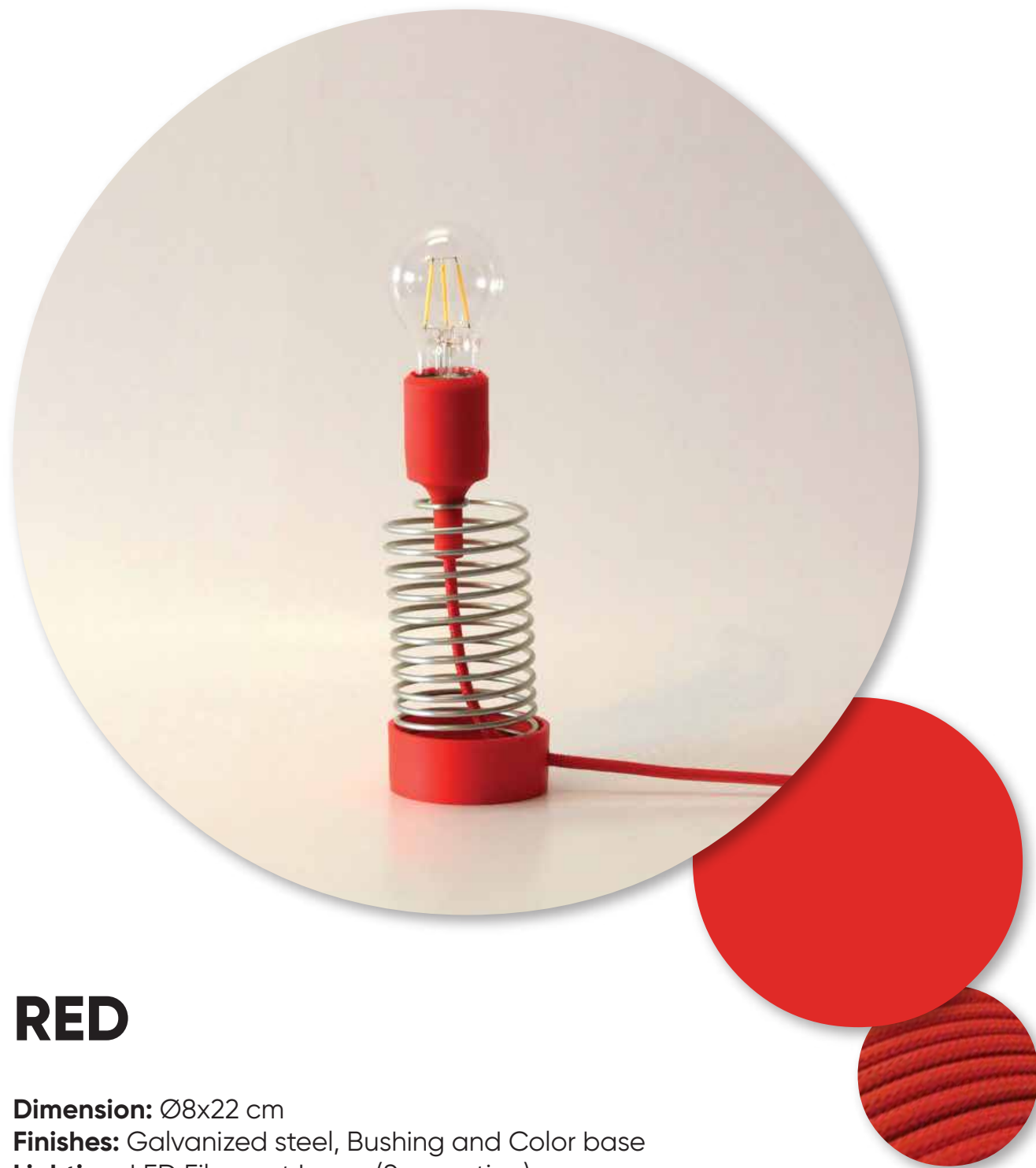
The lamp inspired by the small Victorian toy Zoótropo which, through its lighting and rotating movement, brought the magic of the animations inside.

Zotropo brings that light and magic back to the comfort of every space that surrounds it, at home or in the office, on the desk or on the ceiling.

Dimension: Ø8x22 cm

Material: Steel, Bushing and Silicone Base

Finishes: Galvanized steel, Bushing and Color base



RED

Dimension: Ø8x22 cm

Finishes: Galvanized steel, Bushing and Color base

Lighting: LED Filament Lamp (Suggestion)

Cable Dimension: 150 cm

Cable: Coated with plain fabric

Weight: ± 0,65 kg

Inside Packing: 1 Zotropo

Packing Dimension: 27x10x10 cm

Packing: Custom

Note: Previously assemble, does not include lamp



ZOTROPO

REF: zotropored_hugir



YELLOW

Dimension: Ø8x22 cm

Finishes: Galvanized steel, Bushing and Color base

Lighting: LED Filament Lamp (Suggestion)

Cable Dimension: 150 cm

Cable: Coated with plain fabric

Weight: ± 0,65 kg

Inside Packing: 1 Zotropo

Packing Dimension: 27x10x10 cm

Packing: Custom

Note: Previously assemble, does not include lamp



ZOTROPO

REF: zotropoyellow_hugir



BLACK

Dimension: Ø8x22 cm

Finishes: Galvanized steel, Bushing and Color base

Lighting: LED Filament Lamp (Suggestion)

Cable Dimension: 150 cm

Cable: Coated with plain fabric

Weight: ± 0,65 kg

Inside Packing: 1 Zotropo

Packing Dimension: 27x10x10 cm

Packing: Custom

Note: Previously assemble, does not include lamp



ZOTROPO

REF: zotropoblack_hugir



BLUE

Dimension: Ø8x22 cm

Finishes: Galvanized steel, Bushing and Color base

Lighting: LED Filament Lamp (Suggestion)

Cable Dimension: 150 cm

Cable: Coated with plain fabric

Weight: ± 0,65 kg

Inside Packing: 1 Zotropo

Packing Dimension: 27x10x10 cm

Packing: Custom

Note: Previously assemble, does not include lamp



ZOTROPO

REF: zotropoazul_hugir

AMONITA



The marine fossil "Ammonoidea" from the period of the Dinosaurs, originated through its natural and functional elements, the link to modern times.

The metal spiral and its lighting create the illusion of a natural texture between light and shadow in the space that surrounds it.

Dimensions: $\pm \text{Ø}25 \times 5 \text{ cm}$

Material: Steel

Finishes: Thermo Painting - Lacquered



RUBY RED

Dimension: Ø25x5 cm

Finishes: Thermo Painting - Lacquered

Lighting: LED strip, warm light

Cable Dimension: 150 cm

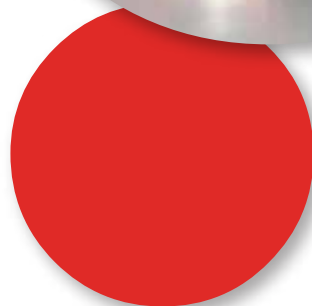
Weight: ± 1,5 kg

Inside Packing: 1 Amonita

Packing Dimension: 31x31x11 cm

Packing: Custom

Note: Previously assemble



AMONITA

REF: amonitarubyred_hugir



LIGHT IVORY

Dimension: Ø25x5 cm

Finishes: Thermo Painting - Lacquered

Lighting: LED strip, warm light

Cable Dimension: 150 cm

Weight: ± 1,5 kg

Inside Packing: 1 Amonita

Packing Dimension: 31x31x11 cm

Packing: Custom

Note: Previously assemble



AMONITA

REF: amonitalightivory_hugir



YELLOW MELON

Dimension: Ø25x5 cm

Finishes: Thermo Painting - Lacquered

Lighting: LED strip, warm light

Cable Dimension: 150 cm

Weight: ± 1,5 kg

Inside Packing: 1 Amonita

Packing Dimension: 31x31x11 cm

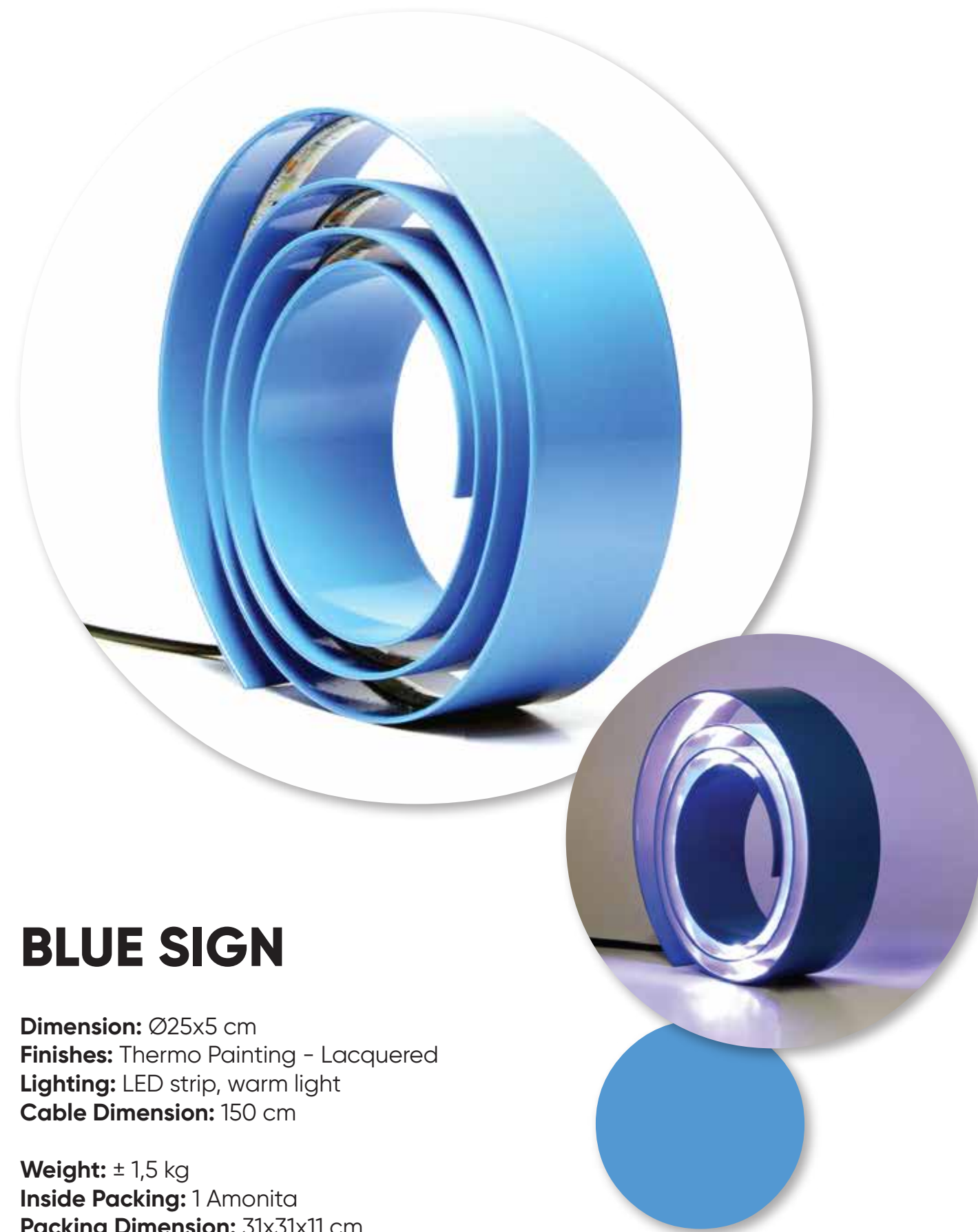
Packing: Custom

Note: Previously assemble



AMONITA

REF: amonitayellowmelon_hugir



BLUE SIGN

Dimension: Ø25x5 cm

Finishes: Thermo Painting - Lacquered

Lighting: LED strip, warm light

Cable Dimension: 150 cm

Weight: ± 1,5 kg

Inside Packing: 1 Amonita

Packing Dimension: 31x31x11 cm

Packing: Custom

Note: Previously assemble



AMONITA

REF: amonitabluesign_hugir



ALUMINIUM

Dimension: Ø25x5 cm
Finishes: Thermo Painting - Lacquered
Lighting: LED strip, warm light
Cable Dimension: 150 cm

Weight: ± 1,5 kg
Inside Packing: 1 Amonita
Packing Dimension: 31x31x11 cm
Packing: Custom
Note: Previously assemble



AMONITA
REF: amonitaaluminium_hugir



BLACK

Dimension: Ø25x5 cm
Finishes: Thermo Painting - Lacquered
Lighting: LED strip, warm light
Cable Dimension: 150 cm

Weight: ± 1,5 kg
Inside Packing: 1 Amonita
Packing Dimension: 31x31x11 cm
Packing: Custom
Note: Previously assemble



AMONITA
REF: amonitablack_hugir

KIT



For your desk or workplace, with a simple, versatile and elegant design, highlighting the nobility of cork with a touch of color.

You can organize everything you need, mobile phone, pens, pencils, diaries, among others, the "Kit" will be your best friend in the organization.

Dimension: 15x10x10 cm

Material: Cork and Steel Sheet

Finishes: Thermo Painting - Lacquered



RED

Holders: Mobile Phone, Pens / Pencils, Letters, Diaries, Deposit

Dimensions: 15x10x10 cm

Material: Cork and Steel Sheet

Weight: ± 0,55 kg

Inside Packing: 1 Kit

Packing Dimension: 16x12x11,5 cm

Paking: Custom



KIT

REF: kitred_hugir



YELLOW

Holders: Mobile Phone, Pens / Pencils, Letters, Diaries, Deposit

Dimensions: 15x10x10 cm

Material: Cork and Steel Sheet

Weight: ± 0,55 kg

Inside Packing: 1 Kit

Packing Dimension: 16x12x11,5 cm

Paking: Custom



KIT

REF: kityellow_hugir



BLACK

Holders: Mobile Phone, Pens / Pencils, Letters, Diaries, Deposit

Dimensions: 15x10x10 cm

Material: Cork and Steel Sheet

Weight: ± 0,55 kg

Inside Packing: 1 Kit

Packing Dimension: 16x12x11,5 cm

Paking: Custom



KIT

REF: kitblack_hugir



BLUE

Holders: Mobile Phone, Pens / Pencils, Letters, Diaries, Deposit

Dimensions: 15x10x10 cm

Material: Cork and Steel Sheet

Weight: ± 0,55 kg

Inside Packing: 1 Kit

Packing Dimension: 16x12x11,5 cm

Paking: Custom



KIT

REF: kitblue_hugir



GREEN

Holders: Mobile Phone, Pens / Pencils, Letters, Diaries, Deposit

Dimensions: 15x10x10 cm

Material: Cork and Steel Sheet

Weight: ± 0,55 kg

Inside Packing: 1 Kit

Packing Dimension: 16x12x11,5 cm

Paking: Custom



KIT

REF: kitgreen_hugir



WHITE

Holders: Mobile Phone, Pens / Pencils, Letters, Diaries, Deposit

Dimensions: 15x10x10 cm

Material: Cork and Steel Sheet

Weight: ± 0,55 kg

Inside Packing: 1 Kit

Packing Dimension: 16x12x11,5 cm

Paking: Custom



KIT

REF: kitwhite_hugir

AGAPHANTO E.T.



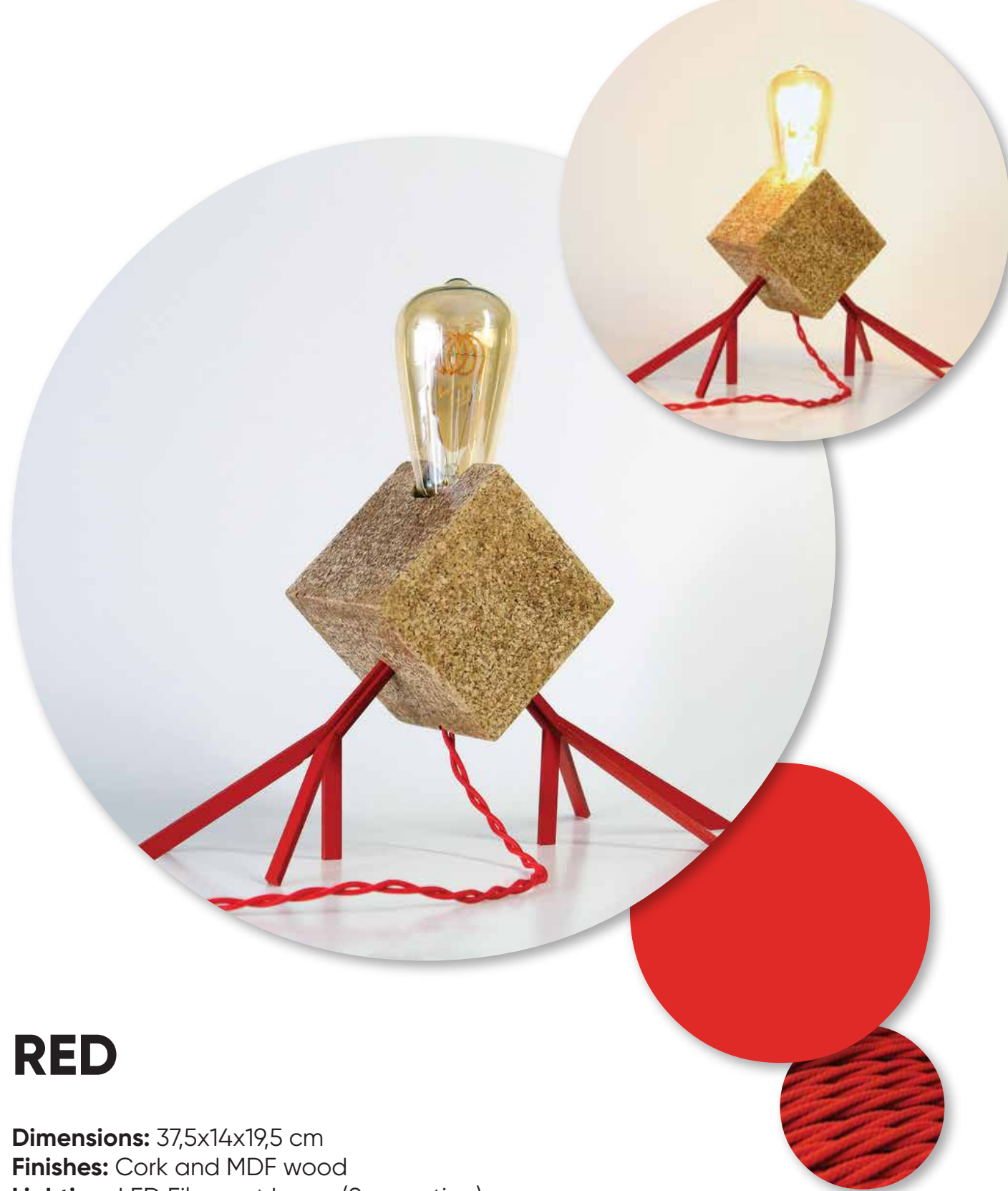
The mixture of cork Nature and the exuberantly flowered "Agapanthus" herb, inspires the minimalist shape of the Agaphanto E.T. table lamp.

Ideal for comfort zones, where its shape and lighting adapts to any environment or decoration, at home or in the office.

Dimensions: 37,5x14x19,5 cm

Material: Cork and MDF wood

Finishes: Feet and color of coated cable



RED

Dimensions: 37,5x14x19,5 cm

Finishes: Cork and MDF wood

Lighting: LED Filament Lamp (Suggestion)

Cable Dimension: 150 cm

Cable: Fabric covered with braid effect

Weight: ± 0,55 kg

Inside Packing: 1 cube cube + 2 feet + instruction manual

Packing Dimension: 25x18x12 cm

Packing: Custom

Note: Previously assemble, does not include lamp



AGAPHANTO E.T.

REF: agaphantoetred_hugir



YELLOW

Dimensions: 37,5x14x19,5 cm

Finishes: Cork and MDF wood

Lighting: LED Filament Lamp (Suggestion)

Cable Dimension: 150 cm

Cable: Fabric covered with braid effect

Weight: ± 0,55 kg

Inside Packing: 1 cube cube + 2 feet + instruction manual

Packing Dimension: 25x18x12 cm

Packing: Custom

Note: Previously assemble, does not include lamp



AGAPHANTO E.T.

REF: agaphantoetyellow_hugir



BLACK

Dimensions: 37,5x14x19,5 cm

Finishes: Cork and MDF wood

Lighting: LED Filament Lamp (Suggestion)

Cable Dimension: 150 cm

Cable: Fabric covered with braid effect

Weight: ± 0,55 kg

Inside Packing: 1 cube cube + 2 feet + instruction manual

Packing Dimension: 25x18x12 cm

Packing: Custom

Note: Previously assemble, does not include lamp



AGAPHANTO E.T.

REF: agaphantoetblack_hugir



BLUE

Dimensions: 37,5x14x19,5 cm

Finishes: Cork and MDF wood

Lighting: LED Filament Lamp (Suggestion)

Cable Dimension: 150 cm

Cable: Fabric covered with braid effect

Weight: ± 0,55 kg

Inside Packing: 1 cube cube + 2 feet + instruction manual

Packing Dimension: 25x18x12 cm

Packing: Custom

Note: Previously assemble, does not include lamp



AGAPHANTO E.T.

REF: agaphantoetblue_hugir



WHITE

Dimensions: 37,5x14x19,5 cm

Finishes: Cork and MDF wood

Lighting: LED Filament Lamp (Suggestion)

Cable Dimension: 150 cm

Cable: Fabric covered with braid effect

Weight: ± 0,55 kg

Inside Packing: 1 cube cube + 2 feet + instruction manual

Packing Dimension: 25x18x12 cm

Packing: Custom

Note: Previously assemble, does not include lamp



AGAPHANTO E.T.

REF: agaphantoetwhite_hugir



**#DESIGN
WITH TEXTURE**

TALK TO US



351 919 946 467



hugirdesign@outlook.com



Soon we will have a space to visit.

**#DESIGN
MADE IN PORTUGAL**
www.hugirdesign.com